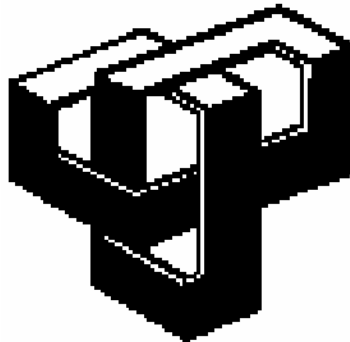


HOW IN THE WORLD DO I USE THE

NACURH FORUM???



All the information you ever wanted to know about the NACURH forum is included in this packet. This will help you setup an account, post messages, and understand what the forum is all about.



Prepared by:
James Tobin
GLACURH Director
2003 - 2004



WHAT IS THE NACURH FORUM?

The NACURH Forum was developed in the fall of 2003 as another means of communication between Regions, Schools, and other members of NACURH. This is one way to centralize most of the communication that occurs within NACURH and another resource that we offer to the member schools of NACURH. As NACURH's main focus is to improve the residence halls and provide resources for its member schools the National Board of Directors (NBD) felt that this was a way to give the NCC's, NRHH Reps, and Advisors a way to communicate along with the NBD and the respective Regional Board of Directors from each region. The overall goal of the forum is to increase communication, provide an exchange of ideas, and provide a medium for schools to communicate.

Outlined below are steps to register for the NACURH Forum, ways to use the NACURH forum, and what options you have in using the forum.

Should you have any questions about using the Forum please contact either your RCC or any other RBD member as we are here to serve you and assist you whenever you need us! ☺

Much GLACURH Luv,
James

HOW DO I REGISTER?

In order to register for the NACURH Forum you will need to go to the following website:

<http://www.nacurh.org/forum/index.php>

Once you click on the link you will see:

The screenshot shows the NACURH Forum Index page. The navigation menu includes links for FAQ, Search, Memberlist, Usergroup, Register, Profile, and Log in to check your private messages. The 'Register' link is circled in red. A red arrow points from a text box on the right to the 'Register' link.

Forum	Topics	Posts	Last Post
General Discussion			
General-NACURH General discussion about NACURH.	11	40	Sun Mar 07, 2004 12:23 am lilmissphish
Questions for NACURH Execs Pose a question for the NACURH Executives. Please be sure to leave your school name and a valid email address, or your post may be removed.	1	2	Fri Feb 27, 2004 11:50 pm NationalChair
Bi-Weekly Questions A Bi-Weekly source of questions moderated by the National Chair geared at fostering discussion and creating an archive of usable information about our member schools.	3	29	Sat Mar 06, 2004 9:08 pm Catholic University
National Information Center			
General-NIC General discussion on the NIC hosted at the University of Florida. Moderator: serota	1	1	Sat Feb 07, 2004 8:47 pm serota
Questions for NIC Pose a question for the NIC Staff. Please be sure to leave your school name and a valid email address, or your post may be removed. Moderators: serota , ryancolt	4	10	Sat Mar 06, 2004 11:34 pm lilmissphish
National Residence Hall Honorary National Office			
General-NRHH NO General discussion on the National Office at the University of Wisconsin, Whitewater.	1	1	Tue Feb 24, 2004 11:47 pm

Click on this link to register for the NACURH forum.

After you get to this page you will want to click on the Register link.


After you get to the Registration page just follow the page and fill in the corresponding information.

NACURH :: Register - Microsoft Internet Explorer

File Edit View Favorites Tools Help

Back Forward Stop Refresh Home Search Favorites Links BSU Student Services BSU Housing Blackboard Yahoo!

Address http://www.nacurh.org/forum/profile.php?mode=register&agreed=true



NACURH

National Association of College and University Residence Halls, Inc.

[FAQ](#)
[Search](#)
[Memberlist](#)
[Usergroups](#)
[Register](#)
[Profile](#)
[Log in to check your private messages](#)
[Log in](#)

NACURH Forum Index

Registration Information

Items marked with a * are required unless stated otherwise.

Username: *

E-mail address: *

Password: *

Confirm password: *

Profile Information

This information will be publicly viewable

ICQ Number:

AIM Address:

MSN Messenger:

Yahoo Messenger:

Website:

Location:

Occupation:

Interests:

Signature:
This is a block of text that can be added to posts you make.
There is a 255 character limit

HTML is [OFF](#)
BBCode is [ON](#)
Smilies are [ON](#)

Preferences

Always show my e-mail address: Yes No

Hide your online status: Yes No

Always notify me of replies:
Sends an e-mail when someone replies to a topic you have posted in. This can be changed whenever you post. Yes No

Notify on new Private Message: Yes No

Pop up window on new Private Message:
Some templates may open a new window to inform you when new private messages arrive. Yes No

Always attach my signature: Yes No

Always allow BBCode: Yes No

Always allow HTML: Yes No

Always enable Smilies: Yes No

Board Language:

Board Style:

Timezone:

Date format:
The syntax used is identical to the PHP [date\(\)](#) function.

Done Internet

After you have completed filling out this registration form click submit and you are now ready to start using the NACURH forum! 😊😊😊😊😊

HOW DO I USE THE FORUM?

After registering for the Forum you will have the opportunity to start posting messages to the forum for all to see:

The time now is Thu Mar 11, 2004 3:08 pm
NACURH Forum Index [View unanswered posts](#)

Forum	Topics	Posts	Last Post
General Discussion			
General-NACURH General discussion about NACURH.	11	40	Sun Mar 07, 2004 12:23 am lilmissphish →
Questions for NACURH Execs Pose a question for the NACURH Executives. Please be sure to leave your school name and a valid email address, or your post may be removed.	1	2	Fri Feb 27, 2004 11:50 pm NationalChair →
Bi-Weekly Questions A Bi-Weekly source of questions moderated by the National Chair geared at fostering discussion and creating an archive of usable information about our member schools.	3	29	Sat Mar 06, 2004 9:08 pm Catholic University →
National Information Center			
General-NIC General discussion on the NIC hosted at the University of Florida. Moderator serota	1	1	Sat Feb 07, 2004 8:47 pm serota →
Questions for NIC Pose a question for the NIC Staff. Please be sure to leave your school name and a valid email address, or your post may be removed. Moderators serota , rvancolt	4	10	Sat Mar 06, 2004 11:34 pm lilmissphish →
National Residence Hall Honorary National Office			
General-NRHH NO General discussion of the NRHH National Office at the University of Wisconsin - Whitewater	4	4	Tue Feb 24, 2004 11:47 pm

There are many different areas that you can post comments, questions, or issues to. Some of these areas are:

- **General Discussion** – *This area is for any general NACURH information and/or questions. You can post questions for other NACURH schools to post here and you can also post questions or comments for NACURH Executives. The final area is the Bi-Weekly Question which will be posted every other week for everyone to respond to. I encourage you to look at this and post responses to it.*
- **National Information Center** – *This area is designed to handle any NIC questions or comments. Feel free to post your thoughts, questions or concerns in this area for the NIC.*

- National Residence Hall Honorary - *This area is designed to handle any NRHH National Office questions or comments. Feel free to post your thoughts, questions or concerns in this area for the NRHH NO.*
- General – GLACURH – *This is an area for GLACURH member schools, RBD, and Advisors to post GLACURH related info to.*
- GL – NRHH – *A specific area for GLACURH NRHH Reps to post NRHH related issues and topics. NCC's are more than welcome to post to this area, but it is designed to be specifically dealing with NRHH topics.*

FEEL FREE TO LOOK AT OTHER REGIONS PAGES AND SEE WHAT THEY ARE TALKING ABOUT. You are more than welcome to offer your response to their pages, but your primary focus should be:

- General Discussion
- National Information Center
- National Residence Hall Honorary
- GLACURH

HOW TO POST TO THE FORUM?

After you have registered for the forum and are ready to start posting messages this is how you can post your comments and questions to the forum:

General-GLACURH
 Moderator: [glacurhdirector](#)
 Users browsing this forum: None

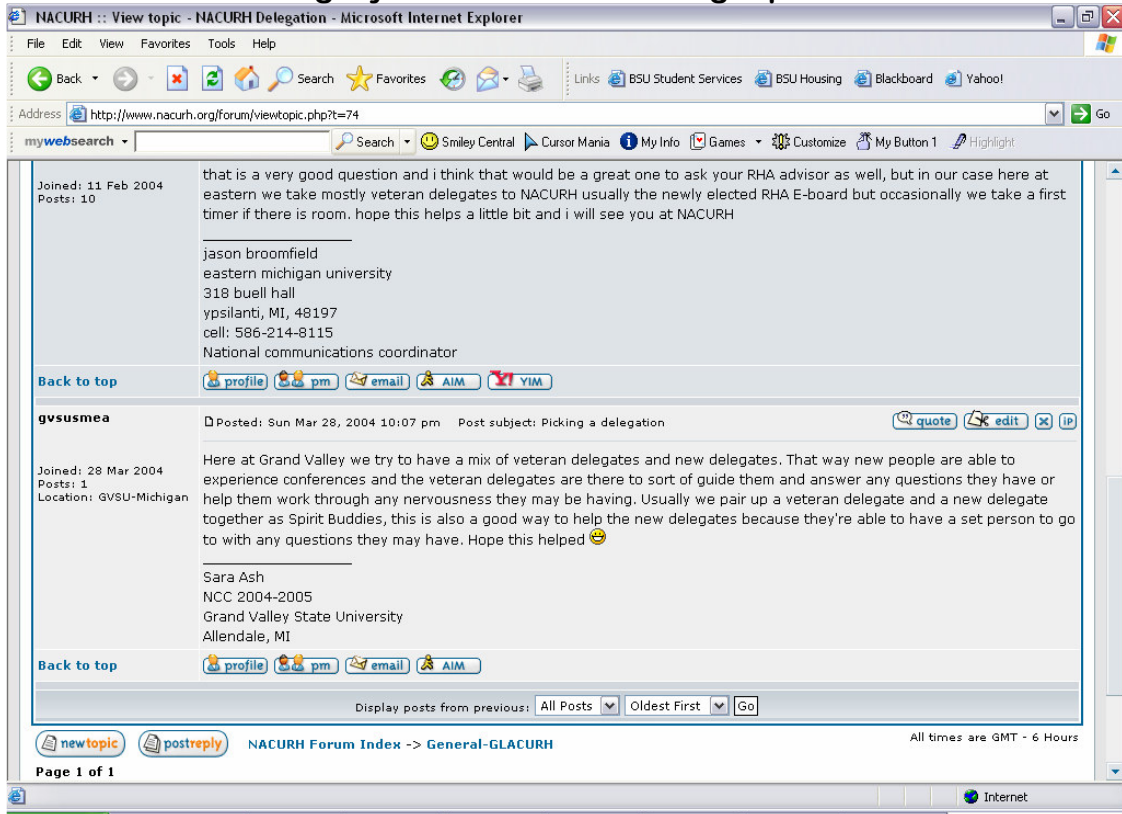
[new topic](#) NACURH Forum Index -> General-GLACURH [Mark all topics read](#)

Topics	Replies	Author	Views	Last Post
NACURH Delegation	2	purdue	35	Sun Mar 28, 2004 10:07 pm qvsusmea →
NACURH School Stuff	0	purdue	19	Wed Mar 17, 2004 6:27 pm purdue →
Leadership Recruitment	3	glacurhdirector	41	Mon Mar 08, 2004 12:55 am broomstick203 →
MOWII Welcomes all	7	glacurhdirector	134	Thu Mar 04, 2004 11:20 pm glacurhdirector →
RHA positions	4	broomstick203	81	Thu Mar 04, 2004 10:59 pm purdue →
GLACURH Website!	0	glacurhdirector	22	Sun Feb 29, 2004 4:08 pm glacurhdirector →
REGIONAL GOAL!!!!	0	glacurhdirector	24	Fri Feb 27, 2004 1:45 pm glacurhdirector →
[Poll] Philanthropy Goal	2	glacurhdirector	133	Tue Feb 24, 2004 7:06 pm qvsu NCC →
Regional Philanthropy Goal	2	glacurhdirector	61	Thu Feb 19, 2004 1:17 am Redfox374 →

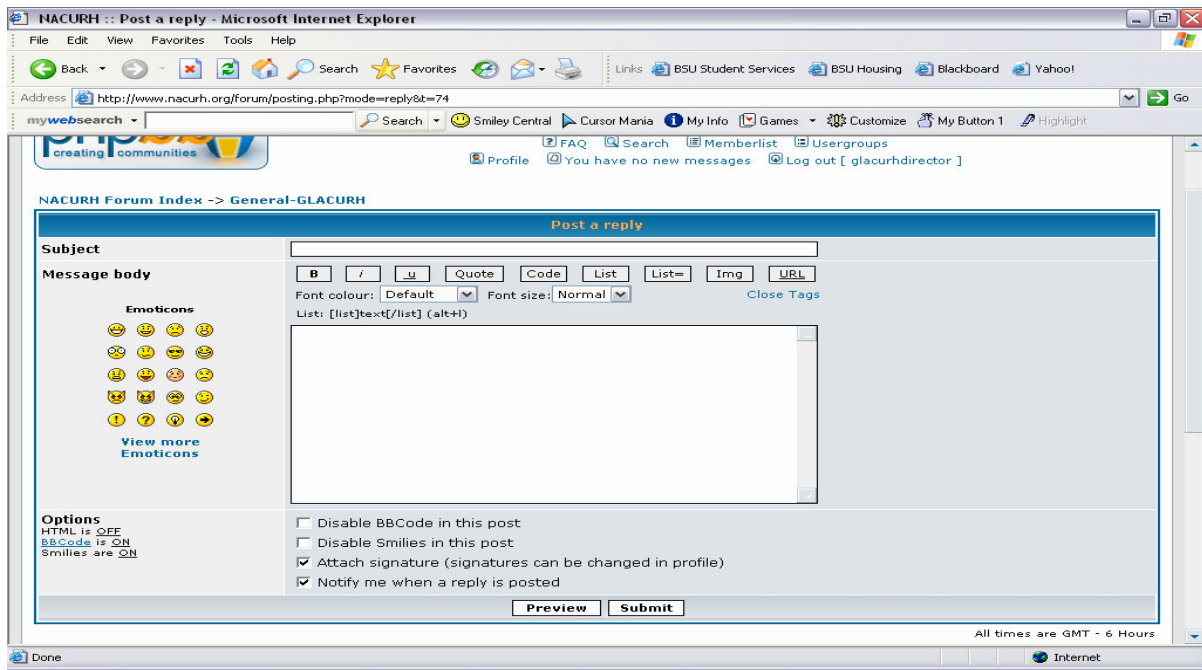
Display topics from previous:

[new topic](#) NACURH Forum Index -> General-GLACURH All times are GMT - 6 Hours

The above picture you can see the various topics being discussed in the General-GLACURH folder. When you find a topic that you would like to comment or post a question in, click on the topic to open its individual discussion. If you would like to post a new topic that you don't see posted click on "New Topic." You will find the following if you click on an existing topic:



This is a sample of the discussion inside a topic. To post a reply to a comment just click "Post Reply". Fill in the boxes and post your message.



If you want to start a new topic this is what you'll see:

The screenshot shows a web browser window titled "NACURH :: Post a new topic - Microsoft Internet Explorer". The address bar shows the URL: <http://www.nacurh.org/forum/posting.php?mode=newtopic&f=11>. The main content area is titled "Post a new topic" and contains the following elements:

- Subject:** A text input field.
- Message body:** A rich text editor with buttons for Bold (B), Italic (i), Underline (u), Quote, Code, List, List=, Img, and URL. It also includes font color and size dropdown menus and a "Close Tags" link.
- Emoticons:** A grid of 20 emoticon icons with a "View more Emoticons" link below.
- Options:** A section with checkboxes for "Disable BBCode in this post", "Disable Smilies in this post", "Attach signature (signatures can be changed in profile)", and "Notify me when a reply is posted". It also includes radio buttons for "Post topic as: Normal", "Sticky", and "Announcement".
- Add a Poll:** A section with a blue header "Add a Poll" and a note: "If you do not want to add a poll to your topic, leave the fields blank." It includes fields for "Poll question", "Poll option", and "Run poll for" (with a "Days" label and a note "[Enter 0 or leave blank for a never-ending poll]"). There is an "Add option" button next to the "Poll option" field, and "Preview" and "Submit" buttons at the bottom.

In the above area you can post a new topic for discussion or as you can see at the bottom you can post a poll question. In order to post a poll question you will have to have something typed in the body of the message, but you can ask the region various questions about topics.

Using the forum can be as much or as little as you make it. You are encouraged to take full advantage of this resource. Below are some ways in which you can use the forum.

- Addressing Issues on your campus
- Start a poll to figure out what people like and what they don't like
- Programming ideas for your RHA or Residence hall
- Questions regarding conference delegations
- Announcements for recognition, awards, and other related information.
- General information about upcoming conferences
- Monthly reports
- Receive information from the RBD or NACURH.
- And any other means that you feel the forum can be used for.

WHO DO I CONTACT WITH PROBLEMS OR ISSUES?

If you begin to experience problems either registering for the forum or posting responses to the forum, feel free to contact the following individuals:

James Tobin (Director)
H: 765-214-7569
E-Mail: jatobin@bsu.edu
AOL: toby8390

David Rosenberg (AD-IT)
H: 773-973-9139
E-Mail: drosen3@luc.edu
AOL: y2500